



SIDE CURB BRUSH

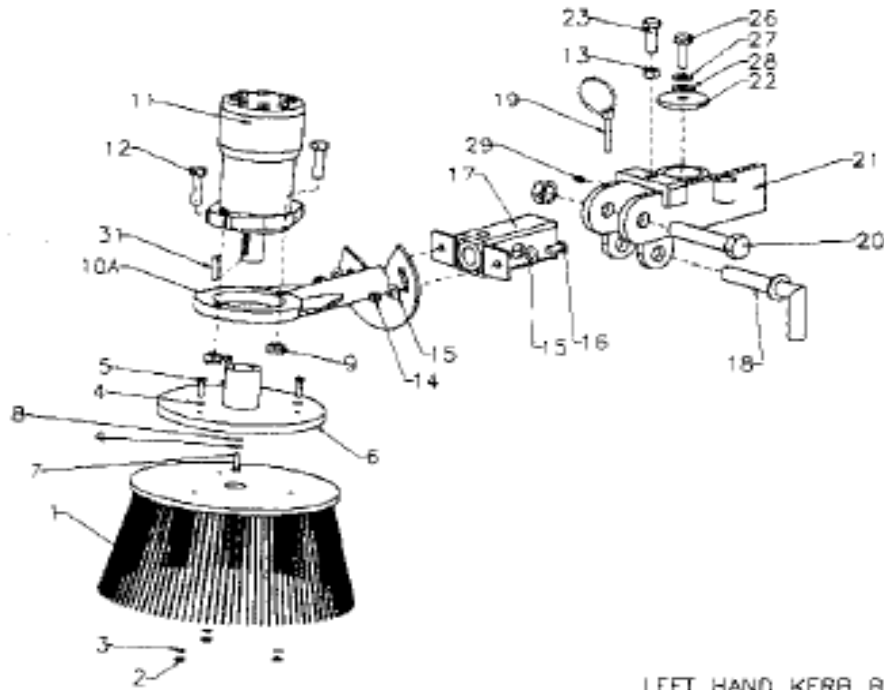
ITEM	PART NO.	DESCRIPTION	QTY.
1	B100	CURB BRUSH - POLY / WIRE MIX	1
1A	B100A	CURB BRUSH - ALL POLY	1
1B	B100C	CURB BRUSH - ALL WIRE	1
2	F116	LOCK NUT	3
3	F153	FLAT WASHER	3
4	F121	SPRING WASHER	1
5	F118	BOLT	3
6	B131	BRUSH MOUNT DISC	1
7	F112	CENTRE BOLT - ONTO MOTOR	1
8	F220	FLAT WASHER	1
9	F101	NUT	2
10A	B132	MOTOR MOUNT ARM - L/H	1
10B	B119	MOTOR MOUNT ARM - R/H	1
11	H103	MOTOR	1
11A	H235	SEAL KIT - MOTOR	1
12	F103	BOLT	2
13	F211	ADJUSTER NUT	1
14	F114	NUT	2
15	F119	FLAT WASHER	2
16	F146	BOLT	2
17	B133	HINGE SOCKET - L/H	1
18	V213	PIN	1
19	V214	LYNCH PIN	1
20	F222	BOLT	1
21	B134	MOUNT SECTION - L/H	1
22	V111	RETAINING CAP	1
23	F100	BOLT	1
25	B136	HINGE SOCKET - R/H	1
26	F102	BOLT - FOR RETAINING CAP	1
27	F185	SPRING WASHER	1
28	F132	FLAT WASHER	1
29	F216	GREASE NIPPLER	1
30	B137	MOUNT SECTION - R/H	1
31	H179	SHAFT KEY (ON MOTOR DRIVE)	1

MULTISWEEP

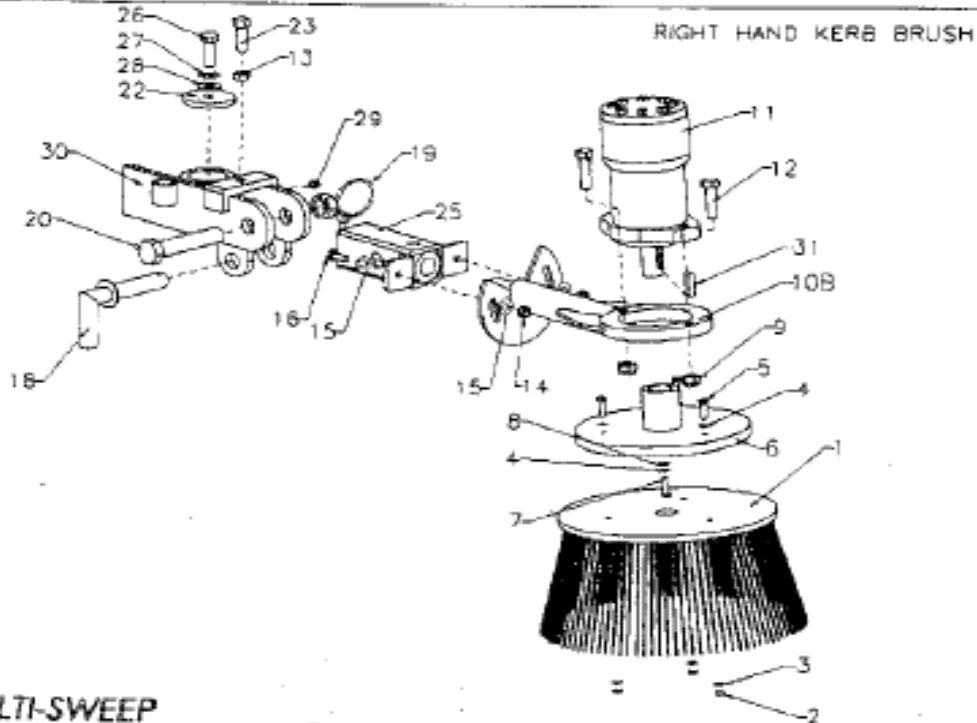
MALLOW ROAD ENGINEERING
ALL RIGHT RESERVED ©2010

WWW.MULTISWEEP.COM

KERB BRUSH - PARTS LISTING

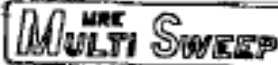


LEFT HAND KERB BRUSH



RIGHT HAND KERB BRUSH

MULTI-SWEEP



MALLOW ROAD ENGINEERING
 MALLOW ROAD, BROWNSMERE, ANTRIM Co. CORK, IRELAND
 TEL. 00 353 29 58 02 FAX 00 353 29 5834
 email: info@multisweep.com